

FlexStone™ Basket

Single-Use Steerable Stone Retrieval Basket

FEATURES



REVOLUTIONARY STEERABILITY

The only basket offering independent steerability for precise navigation in challenging anatomies and difficult-to-reach stones.



BUILT FOR THE TOUGHEST CASES

Designed to handle complex anatomies and lower pole stones while enabling more efficient procedures in routine cases.



SEAMLESS INTEGRATION

Compatible with third-party scopes, ensuring effortless adoption into any clinical workflow.



PROTECT YOUR EQUIPMENT

Independent steerability reduces the steering burden on scopes

- World's First Steerable Kidney Basket
- Optimized Retrieval Efficiency
- Greater Stone Access Than Ever Before

Highly flexible transmission

Tip Steering Controls

Basket Controls

Outer Diameter:
0.7mm (2.1Fr)

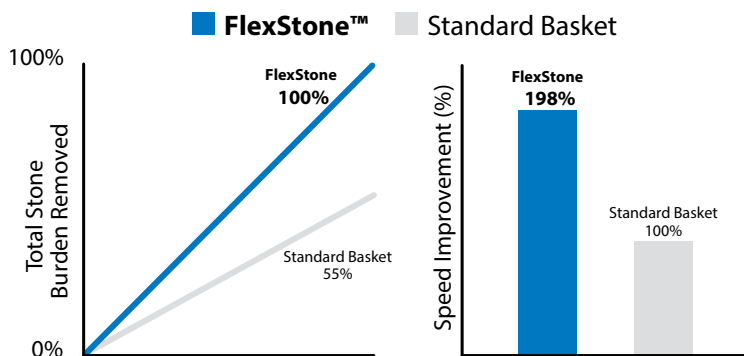
Steerable Tip up to $\pm 90^\circ$
Opens to 11mm



BASKET CONTROLS

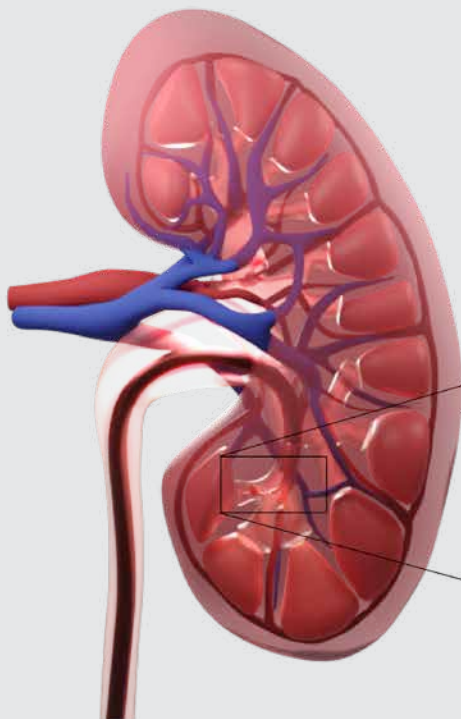


TIP CONTROLS



| | |
|----------------------------|----------------------------|
| Product Description | ET Flexstone Basket 2.1 FR |
| Product Code | FSA12021 |
| Outer Diameter | 0.7mm (2.1 Fr) |
| Basket Diameter | 11 mm |
| Working Length | 120 cm |
| Tip Steering | ±90° |

*as shown in preclinical experimental feasibility studies



UNMATCHED CONTROL

Advanced tipless retrieval cage, 2.1F (0.7mm) highly flexible transmission, ergonomic handle, and independent steerability promote effective stone extraction.

